



Welcome Mads
Harner our 2025 Yale
Climate and Health
Intern...Coming soon
to a city near you!

Mads was born and raised in Michigan, where she attended the University of Michigan, receiving a Bachelor of Science in Nursing. She then moved to Philadelphia PA where she worked as a NICU nurse from 2022-2024. Now, Mads is a Master of Public Health candidate at the Yale School of Public Health. She has a strong passion for empowering and educating people/communities, especially in climate-health related topics and will be working with MtHPHC through the summer of 2025.

Audubon/MtHPHC Enviro-Art 2025 A Closer look at Climate Change

Our 2025 Collaborative Art Creation:



Farm Summit

EVENT ALMOST FILLED

A Montana first-of-its-kind blend of climate change-human health-nutrition-and Regenerative agriculture. July 11-12. Limited to 25 participants. [Info and Register here](#). Sponsored by MthPHC, Farm to Crag, Bob Quinn Institute, Vilicus Farms, Abundant Montana.

Intersections of Farming, Climate, and Health: An On-farm Summit in Northern Montana

FOOD AS MEDICINE BEGINS IN THE FIELDS
THIS SUMMIT IS CATERED TOWARDS HEALTHCARE PROFESSIONALS, HEALTHCARE STUDENTS AND FOOD SYSTEM CONTRIBUTORS.



JULY 11 & 12, 2025 | QUINN INSTITUTE & VILICUS FARMS

JOIN US for an immersive two-day event that explores regenerative agriculture, innovative food and farming systems, and health-driven practices. Participants will engage in field tours showcasing sustainable farming techniques, including dryland vegetables, crop rotation, and health-driven genetics. Experts will discuss food as medicine, featuring local programs. Topics include the economics of stewardship, food education, and how health providers can support resilient, local food and farming systems, and foster meaningful conversations building healthier communities.

Scan to register!
Limited tickets available - food, tours, and parking included. Camping and accommodations available, inquire more by scanning the QR code.
<https://damotion.org/event/6728098>

FRIDAY

2:00 pm - 8:00 pm Arrive at Quinn Institute. Field tour & workshops. Farm To Crag catered Dinner at Bob Quinn's. "Food as Medicine" presentation & discussion.

SATURDAY

8:30 am - 12:30 pm Arrive at Vilicus Farms for a hearty breakfast. Field tour & discussions on Farm Systems, Economics of Stewardship, and more. Lunch featuring Montana Rye & local ingredients.

1:30 pm - 2:30 pm Abundant Montana 33x33 Initiative & discussion. Closing conversation & next steps for expanding the food as medicine efforts in our communities.







Missoula Free Cycles Event

Arranged by students in Dr Jen Robohm's "Mental Health and Climate Change Course: Food, music, conversations to build community, resolves, and resilience in the face of climate change.




Three Quick Ways You Can Really Help:




- \$400 Billion Invested**
Across the United States
- \$238 Billion Added to GDP**
by New Projects During Construction
- 621,000 New Jobs**
Created and Supported in First Two Years

Investments in Montana



\$2.4 Billion Invested
across the state



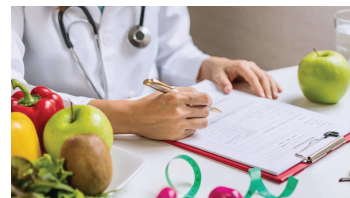
14 Clean Energy Projects
including battery storage and solar



5,200
direct and non-direct jobs

1: Help Us Protect The Clean Energy Tax Credits Already Signed into Law!

Sign our letter to our Senators! Budget cuts threaten these climate-protective credits. Montana jobs and families will be hurt. [More information here.](#) [Sign form letter here.](#)



2: Protect EPA's

3: Your Hospital's



Energy Star Program

Energy Star, an entirely voluntary program, is the most popular program ever created at EPA and is under threat. [Please sign this letter from Practice Greenhealth!](#)

Nutrition Department:

Do you know someone?

Summer intern Mads Harner will be visiting MT hospitals this summer to see if there is interest in more local foods. If you know a name at your hospital, please let her know at mharner@montanahphc.org



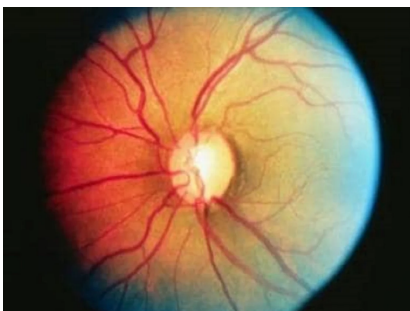
September 1

Thinking about getting involved?

Would you consider tabling, manning the conference registration table, writing a story, or taking another action as part of MtHPHC? That is great! [Join us as a Climate Health Steward](#) or contact us at info@montanahphc.org!

Recent Actions

- 25.05.25 Karen Stears, genetics counselor: [LTE Billings Gazette](#):
- 25.05.20 Rob and Lori Byron. Teaching a Johns Hopkins course on Climate Change and Human Health
- 25.07.25 Clean Med plenary panel
- 25.07.25 Clean Med2025 presentation: E-Liability Method of Carbon Accounting
- 25.05.05 Beth Schenk CU Sustainability Course invites speaker
- 25.05.29 [Madisonian OpEd](#), Climate Change and our Health, Rob and Lori Byron
- 25.02 Dr Marian Kummer, [Mtclimatestories](#) submission



Teaching Corner

Ophthalmology and Climate Change

[Impacts of climate change on ocular health: A scoping review.](#) Our colleagues teach us all the risks to our eyes!

Montana Health Professionals for a Healthy Climate

P.O. Box 1972
Red Lodge, Montana
59068

Click below to stop receiving email from us.

[Unsubscribe](#)

